



manchester COMPASS

School Year Resource Guide



2025-2026

The Compass

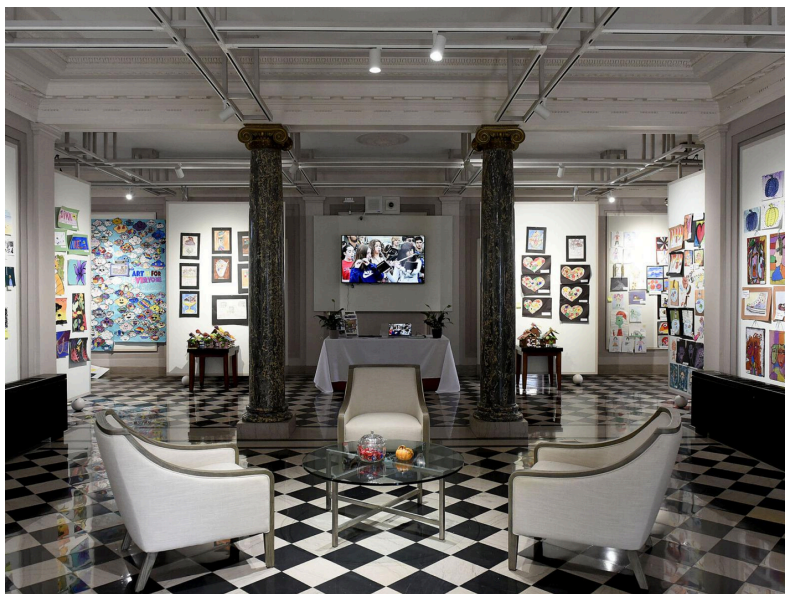
This School Year Resource Guide is a culmination of opportunities from Community Partners.

These and other opportunities are listed on Manchester Proud's Compass. In addition to these opportunities, the Compass has a community calendar where you can explore events taking place within the community!



Please scan the QR Code in the center of the Compass to explore the online portal.

Family Welcome Center



**Manchester School District's Family Welcome Center at
French Hall
148 Concord Street Manchester, NH 03104**

The Family Welcome Center opened in the fall of 2024. The space operates year round and serves as a hub for all things related to the school district. Families can visit the Welcome Center for help with registration, language support and to connect with community partners.



<https://www.mansd.org/>

MANCHESTERSCHOOL DISTRICT

2025-2026 School Calendar

CALENDAR

All days below fall during the school year. Details on days off and other important dates are listed on the right side of this page.

Calendar legend:

No school: ① All grades early release: △ Elementary early release: □

September 2025

| M | T | W | T | F |
|----|----|----|----|----|
| | | | 4 | 5 |
| 8 | 9 | 10 | 11 | 12 |
| 15 | 16 | 17 | 18 | 19 |
| 22 | 23 | 24 | 25 | 26 |
| 29 | 30 | | | |

October 2025

| M | T | W | T | F |
|----|----|----|----|----|
| | | 1 | 2 | 3 |
| 6 | 7 | 8 | 9 | 10 |
| 13 | 14 | 15 | 16 | 17 |
| 20 | 21 | 22 | 23 | 24 |
| 27 | 28 | 29 | 30 | 31 |

November 2025

| M | T | W | T | F |
|----|----|----|----|----|
| 3 | 4 | 5 | 6 | 7 |
| 10 | 11 | 12 | 13 | 14 |
| 17 | 18 | 19 | 20 | 21 |
| 24 | 25 | 26 | 27 | 28 |

December 2025

| M | T | W | T | F |
|----|----|----|----|----|
| 1 | 2 | 3 | 4 | 5 |
| 8 | 9 | 10 | 11 | 12 |
| 15 | 16 | 17 | 18 | 19 |
| 22 | 23 | 24 | 25 | 26 |
| 29 | 30 | 31 | | |

January 2026

| M | T | W | T | F |
|----|----|----|----|----|
| | | | 1 | 2 |
| 5 | 6 | 7 | 8 | 9 |
| 12 | 13 | 14 | 15 | 16 |
| 19 | 20 | 21 | 22 | 23 |
| 26 | 27 | 28 | 29 | 30 |

February 2026

| M | T | W | T | F |
|----|----|----|----|----|
| 2 | 3 | 4 | 5 | 6 |
| 9 | 10 | 11 | 12 | 13 |
| 16 | 17 | 18 | 19 | 20 |
| 23 | 24 | 25 | 26 | 27 |

March 2026

| M | T | W | T | F |
|----|----|----|----|----|
| 2 | 3 | 4 | 5 | 6 |
| 9 | 10 | 11 | 12 | 13 |
| 16 | 17 | 18 | 19 | 20 |
| 23 | 24 | 25 | 26 | 27 |
| 30 | 31 | | | |

April 2026

| M | T | W | T | F |
|----|----|----|----|----|
| | 1 | 2 | 3 | |
| 6 | 7 | 8 | 9 | 10 |
| 13 | 14 | 15 | 16 | 17 |
| 20 | 21 | 22 | 23 | 24 |
| 27 | 28 | 29 | 30 | |

May 2026

| M | T | W | T | F |
|----|----|----|----|----|
| | | | | 1 |
| 4 | 5 | 6 | 7 | 8 |
| 11 | 12 | 13 | 14 | 15 |
| 18 | 19 | 20 | 21 | 22 |
| 25 | 26 | 27 | 28 | 29 |

June 2026

| M | T | W | T | F |
|----|----|----|----|----|
| 1 | 2 | 3 | 4 | 5 |
| 8 | 9 | 10 | 11 | 12 |
| 15 | 16 | 17 | | |

IMPORTANT DATES

Full calendar is available at www.mansd.org/events

Translated calendars available at
www.mansd.org/page/calendars-printable

First day of school (K-12): Thursday, September 4

First day of school (preschool): Monday, September 8

Last day of school: Wednesday, June 17

No school dates:

Tuesday, September 16: Primary Election Day

Friday, October 10: Professional Learning Day

Monday, October 13: Columbus Day

Tuesday, November 4: Election Day

Tuesday, November 11: Veterans Day

Wednesday-Friday, November 26-28: Thanksgiving Break

December 24-January 2: Winter Vacation

Monday, January 19: Dr. Martin Luther King, Jr. Day

Monday, February 16: Presidents Day

Monday-Friday, February 23-27: February Vacation

Monday, March 16: Professional Learning Day

Monday-Friday, April 27-May 1: April Vacation

Monday, May 25: Memorial Day Holiday

Early release dates:

Friday, November 7: K-4 only early release

Tuesday, December 23: K-12 early release

Wednesday, June 17: K-12 early release

Middle School/High School Quarter Dates:

Monday, November 10: First quarter ends

Wednesday, January 28: Second quarter ends

Thursday, April 9: Third quarter ends

Wednesday, June 17: Fourth quarter ends

Elementary Trimester Dates:

Friday, December 5: First trimester ends

Thursday, March 19: Second trimester ends

Wednesday, June 17: Third trimester ends

Manchester School District Curriculum



Scan the QR code to visit our Curriculum & Assessment page, where Manchester School District outlines its academic standards, curricula, and testing frameworks. It's an ideal starting point for families to understand how our learning goals align with classroom teaching and district-wide expectations.

We invite you to learn more and join us in supporting your student's educational journey. Safe, transparent, and always evolving- this is how Manchester stays focused on achievement for all!

Resources and Offerings

Athletics: Register for athletics using FamilyID at FamilyID.com. You can find more info on MSD athletics offerings by scanning the QR code below or visiting the website.

<https://www.mansd.org/page/athletics>



Aspen Family Portal: Aspen is a secure Student Information Management System. The Manchester School District uses Aspen to manage student information including grading, scheduling, attendance,, special education and other data. Parents and guardians can register for an account to log into Aspen to view basic school related information about their children. At the elementary school level, they have access to daily attendance and reportcard grade information. At the middle and high school level, they have access to daily attendance, schedules, classroom assignments, class attendance, and grades. You can learn more by scanning the QR below or visiting the website.

<https://www.mansd.org/page/home-school-communication-systems>



Communications: Throughout the school year, families can expect communications from both your student's school and the District. A variety of communication tools, including the MSD website, socials media, and email broadcasts, and text/phone calls will be used. If you have questions reach out to **communications@mansd.org**. You can learn more by scanning the QR below or visiting the website

<https://www.mansd.org/page/home-school-communication-systems>



Resources and Offerings

Food & Nutrition: You may be eligible for free or reduced cost breakfast and lunch. You can apply online in as little as 15 minutes. Learn more about MSD school meals program by scanning the QR below or visiting the website. <https://www.mansd.org/page/food-nutrition-services>



Multi-Tiered System of Support for Behavior Health (MTSS-B): Our Mission, in partnership with the community, is to meet the social-emotional and behavioral health needs of all learners, building out students' resilience to support them in reaching their greatest potential in a safe and supportive learning environment. You can learn more by scanning the QR below or visiting the website <https://www.mansd.org/o/msd/page/multi-tiered-system-of-support-for-behavioral-health>



Transportation: You can find more info on MSD Transportation including schedules by emailing Transportation@mansd.org, scanning the QR code or visiting this website

<https://www.mansd.org/o/msd/page/transportation>



Tutoring: Tutor.com for Manchester School District Students Grades 4-12. You can learn more by scanning the QR below or visiting the website <https://www.mansd.org/page/tutoring>



Resources and Offerings

Who to Contact:



**MSD Parents
Guide to Google
Classroom**



**MSD School
Handbook**





MSD Schools and Contacts

Elementary:

Bakersville Elementary School

20 Elm Street Manchester, NH 03101

Phone: 603.623.6312

Beech Street Elementary School

333 Beech Street Manchester, NH 03103

Phone: 603.624.6314

Gossler Park Elementary School

145 Parkside Avenue Manchester, NH 03102

Phone: 603.624.6327

Highland-Goffe's Falls Elementary School

1 Beatrice Lawrence Drive Manchester, NH 03103

Phone: 603.624.6334

Jewett Street Elementary School

130 S. Jewett Street Manchester, NH 03103

Phone: 603.624.6336

McDonough Elementary School

550 Lowell Street Manchester, NH 03103

Phone: 603.624.6373

Northwest Elementary School

300 Youville Street Manchester, NH 03102

Phone: 603.624.6321

Parker-Varney Elementary School

223 James A Pollock Drive Manchester, NH 03102

Phone: 603.624.6338

Smyth Road Elementary School

245 Bruce Road Manchester, NH 03104

Phone: 603.624.6340



MSD Schools and Contacts

Webster Elementary School

2519 Elm Street Manchester, NH 03104

Phone: 603.624.6344

Weston Elementary School

7 Michigan Avenue Manchester, NH 03104

Phone: 603.624.6347

Middle:

Hillside Middle School

112 Reservoir Avenue Manchester, NH 03104

Phone: 603.624.6352

McLaughlin Middle School

201 Jack Lovering Drive Manchester, NH 03109

Phone: 603.624.6247

Parkside Middle School

75 Parkside Avenue Manchester, NH 03109

Phone: 603.624.6356

Southside Middle School

300 South Jewett Street Manchester, NH 03103

Phone: 603.623.6359



MSD Schools and Contacts

High:

Manchester High School Central

535 Beech Street Manchester, NH 03104

Phone: 603.624.6363

Manchester Memorial High School

1 Crusader Way Manchester, NH 03103

Phone: 603.624.6490

Manchester School of Technology

100 Gerald Connors Circle Manchester, NH 03103

Phone: 603.624.6490



Manchester High School West

9 Notre Dame Avenue Manchester, NH 03102

Phone: 603.624.6384



Helpful Phone Numbers

-  **211:** 211 is New Hampshire's first statewide, comprehensive, information and referral service. Thanks to a unique coalition of non-profit, government, corporate and volunteer partners, New Hampshire residents only need to dial 211 to be connected, at no cost, with trained informational and Referral Specialist who can provide them with health and human service information they need to get help, give help or discover options.
-  **988:** The 988 Suicide & Crisis Lifeline is here to help you cope with emotional distress, suicidal thoughts, and provide crisis resources 24 hours a day, seven days a week. The Lifeline is comprised of a national network of over 200 local crisis centers with trained counselors standing by. Combining custom local care and resources with national standards and best practices. Confidential and no cost to you.

Manchester Public Parks



<https://www.manchesternh.gov/Departments/Parks-and-Recreation/Parks-Trails-and-Facilities/Parks>

211 NH

Statewide Information & Referral service available to all residents of NH free of charge, 24/7/365, with help available in over 240 languages. We connect people to vital resources in their communities to assist with their unique needs.



Get Connected. Get Help.™
An Initiative of Granite United Way



www.211nh.org

ABA Centers of America

We provide 1:1 play-based therapy to kids and young adults on the autism spectrum. Our services go where our clients need us, in the center, at home, or in schools. We have no waitlists and provide in-clinic diagnosis.



ABA CENTERS
— OF AMERICA —



<https://www.abacenters.com/>



Access Academy at Saint Anselm College

Access Academy is an after-school program hosted on-campus at Saint Anselm College for Manchester high school students who may need support to access college experiences. Students can choose between a variety of 16 course offerings including classes like "Financial Literacy," "Hip-Hop Dance," "Forensics," "Introduction to Photography" and much more! Access Academy is available on Mondays and Tuesdays, 4-6pm, for a fall and spring session. All successfully completed courses can earn half-credit toward high school graduation!



<https://www.anselm.edu/about/offices-centers-institutes/centers-institutes/meelia-center-community-engagement/access-academy>

American Heart Association

The American Heart Association offers school programs like the Kids Heart Challenge and American Heart Challenge, which promote physical activity, emotional well-being, and heart health through fun, educational activities. Students can also learnt life-saving skills like Hands-Only CPR and AED use. These programs support leadership development, offer service-learning opportunities, and include resources for educators.



American Heart Association.

KIDS
HEART
CHALLENGE

AMERICAN
HEART
CHALLENGE



<https://www.heart.org/en/professional/educator/school-programs>



championing student success.

Amoskeag Health

Amoskeag Health is a nonprofit, federally qualified health center dedicated to improving the health and well-being of patients and communities through comprehensive health care services. Since 1993, we have provided primary care for all ages, nutrition counseling, prenatal and birthing care, family support programs, and mental health services under one roof.



AMOSKEAG
HEALTH



www.amoskeaghealth.org

ARMI | BioFabUSA

We offer a credit-bearing extended learning opportunity for high school students to learn about biofabrication technology, career readiness, and entrepreneurship through our BioTrek program. We have hands-on curriculum designed for community members to use as a part of engaging youth in STEM.



<https://www.armiusa.org/biofabusa/education-and-workforce-development/>



Best Buddies New Hampshire

The Best Buddies School Friendship Program and the Adult Friendship Program provides opportunities for friendship and social connections for students with and without disabilities, including matching in one-to-one meaningful friendships. Best Buddies offer opportunities for leadership development and advocacy while building an inclusive community.



<https://www.bestbuddies.org/newhampshire/>

Currier Museum of Art

School and Youth Tours School tours focus on empowering students to use their voices, develop creative and collaborative problem-solving skills, foster empathy, develop an investigative process with fine art, (re)discover the museum, and make it their own. Tour themes are interdisciplinary and multi-sensory. Museum educators work closely with teachers to make art accessible for every student.

CURRIER
MUSEUM
of ART



<https://currier.org/>



Discovery Education

New Hampshire students have access to Discovery Education Experience through their school login (in Manchester School District it's their Clever login). Students can access videos, interactive activities, and virtual field trips in a safe digital environment that connects classroom lessons to the real world and can be accessed anytime, anywhere.



<https://www.discoveryeducation.com/learn/new-hampshire-partners/>

Duet - College for All!

Fully online, flexible and affordable college degree program for working adults (18+ with a high school diploma) - as low as \$285 per semester for an Associates & Bachelors from SNHU!



www.duet.org

Education Alliance for New Hampshire

The Education Alliance for New Hampshire is a nonprofit that brings together schools, colleges, businesses, and communities to expand educational and career opportunities for students across the state. It leads programs like GEAR UP NH and the NH Family Engagement Center, supporting thousands of students and families each year through college and career readiness, leadership, and family engagement initiatives.



<https://www.edalliancenh.org/>

The Elliot

Life-Saving and Life-Changing Care Every Day

Elliot Health System is the largest provider of comprehensive healthcare services in southern New Hampshire. Its flagship service, Elliot Hospital, is a not-for-profit, 296-bed acute care facility located in Manchester, New Hampshire. Established in 1890, Elliot Health System offers southern New Hampshire communities caring, compassionate and professional patient service regardless of race, religion, national origin, gender, age, disability, marital status, sexual preference, or ability to pay.

Elliot Health System is also home to Manchester's designated Level II Regional Trauma Center, several urgent care centers and outpatient facilities, the only Level III Neonatal Intensive Care Unit in southern New Hampshire, Elliot Physician Network, Elliot Specialists, the Solinsky Center for Cancer Care, Elliot Senior Health Center, Visiting Nurse Association of Manchester and Southern New Hampshire, Elliot 1-Day Surgery Center, Elliot at River's Edge, Elliot Pediatrics and the Mary & John Elliot Charitable Foundation.

We are a DNV-accredited organization that prides itself on providing a wide array of top-quality services provided by a team of healthcare experts. We encourage you to make The Elliot your first choice to give and receive care.



www.elliotohospital.org



FIRST Robotics - Team 501 the PowerKnights West HS

Team 501 is a FIRST Robotics Competition (FRC) team from the greater Manchester, NH area. Our team is formed from a partnership between Manchester High School West and Goffstown High School. We are associated with the 4-H STEM initiative. We accept students from many school districts and homeschooled students. Our team is one of the earliest participants in the FIRST Robotics Competition.



<https://powerknights.com/>

FIRST Robotics Team 238

Team 238 welcomes high-school aged students at Manchester Memorial High School. As members of team 238, students learn life and career skills including project management, team dynamics, CAD, machining, assembly, programming, data analysis, marketing, social media, writing and finance through a project to build a 120 pound robot to compete with other teams in an exciting game each year.



<https://frc238.org>

Friends of Aine Center for Grieving Children and Families

We offer peer to peer support groups at our Center for children ages 4-18 and their caregivers as well as a young adult program for ages 19-26.



<http://friendsofaine.com>

GEAR UP NH

GEAR UP New Hampshire is a college and career readiness program that supports middle and high school students across the state. Funded by a federal grant, GEAR UP NH provides students with academic support, mentoring, college visits, career exploration, and leadership opportunities. The program works closely with schools, families, and communities to help students build the skills and confidence they need to succeed after high school.



<https://nhgearupalliance.org/alliance-programs/gear-up-nh/>

Girl Scouts of the Green and White Mountains

Girl Scouts offers fun, hands-on activities that build confidence, leadership, and life skills in girls all year long. From STEM and outdoor adventures to friendship and community service, there's something for every girl to explore. Families love how Girl Scouts supports growth, belonging, and meaningful experiences both in and out of school.



Girlscoutsgwm.org

Girls at Work

We offer after school woodworking and STEAM programming for girls ages 8 to 14 aimed to build confidence and the belief in their own abilities. Girls in our program receive the option to take home a bag of groceries every week, a new pair of shoes during week four of the program and school supplies.



<https://girlswork.org/>



championing student success.

Girls Inc of New Hampshire

We provide programs in the school day, after school and summer camp programs at our center on Varney Street.

girls
inc.

of New Hampshire



www.girlsincnh.org



championing student success.



Granite Edvance

Granite Edvance has been helping NH families plan and pay for higher education for over 60 years. We provide students, families and schools with expertise and support on all parts of college and career planning. We are laser focused on one thing. Helping you, the students and families of NH.



<https://graniteedvance.org/>

Granite United Way

Granite United Way is a non profit organization that makes strategic investments in our community that helps others Learn, Earn and Be Healthy. Our impact covers more than 85% of New Hampshire and Windsor County, Vermont. Programs include 211, Youth Enrichment Partnership, Volunteer Income Tax Assistance (VITA), Leader in Me Program, Recovery Friendly Workplace, Public Health Networks and Housing Initiatives



<https://www.graniteuw.org/>

The Granite YMCA

The YMCA offers before and afterschool options that work for your family. State assistance and financial scholarships are available. During the school year the Y also offers programs for at risk teens, and an early learning center for our youngest members.



www.graniteymca.org

IINE Language Services

IINE Language Services supports schools, educational partners, and community organizations with professional interpretation in over 300 languages—available in person, by phone, and via video. We also provide certified and notarized translation of official documents such as diplomas, birth certificates, and other records. We support our community & partners by offering a special non-profit rate; please contact us to learn more about how IINE Translation Services can help your organization!



<https://iine.org/what-we-do/language-and-translation-services/>

International Institute of New England

The International Institute of New England helps refugee children and parents to navigate school enrollment and academic transitions, and connects them with after-school programs, summer camp opportunities, post-secondary guidance, and career exploration. Throughout this process, we focus on ensuring the overall health and mental well-being of the children and their families.



www.iine.org

JAG NH

We are a life and career skills class. We help students with their work to ensure they graduate or promote to the next grade while teaching life skills so they can succeed after they graduate. We also follow students for 1 year after they graduate to help them gain employment.



[Www.jagnh.org](http://www.jagnh.org)

Makin' It Happen

For the past 27 years, we have been focused on building resiliency while supporting our mission to create a coordinated response among individuals, organizations, businesses and communities to promote behaviors that measurably improve the overall health and well being of our youth, families, and communities with a focus on alcohol, tobacco and other drug prevention and mental wellness. We are always looking for volunteers!

MAKIN' IT Happen



<https://makinithappen.org/>

Manchester City Library

The Manchester City Library not only allows families to check out books for free but there is a variety of events and services happening weekly.



<https://www.manchester.lib.nh.us/>

Manchester Community College

Manchester Community College is part of the Community College System of New Hampshire and offers more than 60 associate degree and certificate programs for transfer and career training in the areas of: Arts, Humanities and Communication; Business; Education, Social and Behavioral Science; Health Science and Services; Industry and Transportation; and STEM and Automated Manufacturing. MCC also offers non-credit professional and workforce development, and customized corporate training.



<http://www.mccnh.edu/>





Manchester Community Music School

The Manchester Community Music School is home to 50 of New England's finest music educators and board-certified music therapists serving more than 1,500 students and clients from ages 6 months to 95 years young! We offer a variety of music lessons, classes, ensembles, and outreach programming. MCMS is proud to be home to New Hampshire's only Youth Symphony Orchestra, the Queen City Music and Leadership Program, and a robust financial aid and scholarship program to make high quality musical experiences accessible to everyone.



Manchester Community
Music School



<https://mcmusicschool.org/>



championing student success.

Manchester Health Department

We offer little to no cost school based oral health care for all students of the Manchester School District.



**The City of
Manchester, NH**



<https://www.manchesternh.gov/Departments/Health>

Manchester Police Athletic League

MPAL provides FREE athletic and enrichment classes for youth ages 5 - 18.



www.manchesterpoliceathleticleague.org

Manchester Tech Camp

Manchester CREATES hosts a summer camp, for MSD students going into grades 5-12, as well as professional development for MSD middle and high school teachers. Our camp and teachers' PD are focused on biofabrication and regenerative medicine! Camp students can choose one of our two-week sessions, (some count toward ELO credit, for high schoolers, too)!



<https://manchester.unh.edu/outreach/manchester-creates/manchester-tech-camp>

M-Power

M-Power is a mental health and safe schools campaign through Project AWARE (Advancing Wellness and Resiliency in Education) and Manchester School District. M-Power is designed to promote youth mental health, reduce stigma, and encourage students to reach out and connect to services. The campaign is also designed to encourage students to speak up if there is knowledge of a threat to school safety or someone's personal safety.



<https://mpowermanchester.org>

MST Career and Technical Education Center

MST-CTE offers 20 programs that lead to a multitude of college and career pathways that are designed for 10-12th grade students who have a particular interest in a career field. All of our 2-year programs require rigorous study and promote teamwork and practical skill development. Our curricula are designed in collaboration with our College and Industry Partners so that our students can earn industry recognized certifications as well as dual enrollment credits with many colleges around the state that are easily transferable.



<https://mst.mansd.org/o/mst/page/career-technical>

NH Food Bank

The mission of the New Hampshire Food Bank is to feed hungry people by soliciting and effectively distributing grocery products and perishable foods, and offering innovative programs through as statewide network of approved agencies; by advocating for systemic change; and by educating the public about the nature of, and solutions to, problems of hunger in New Hampshire.



<https://nhfoodbank.org/>



NH Hunger Solutions

New Hampshire Hunger Solutions (NHHS), a nonpartisan advocacy organization, supports schools in the School Breakfast Challenge by expanding access to nutritious meals and implementing evidence-based practices like Breakfast After the Bell to boost participation and improve student outcomes. We offer districts guidance on the Community Eligibility Provision (CEP), address school meal debt, and assess cost-effectiveness. NHHS also builds and supports coalitions focused on food access, advocates for policy solutions that address the root causes of hunger, and promotes federal nutrition programs to strengthen food security across New Hampshire.

NH HUNGER
SOLUTIONS
ENDING HUNGER IN NEW HAMPSHIRE



nhhungersolutions.org

NH Navigator

NH Navigator is a grant-funded program that provides free health coverage enrollment assistance to people who live in New Hampshire. Our certified Navigators help consumers enroll in insurance plans on the ACA Marketplace, Medicaid/CHIP, and can help people connect to other resources across the state. This program is operated by the Foundation for Healthy Communities and is funded by a grant from the Center for Medicare & Medicaid Services, a division of the United States Department of Health and Human Services.

NH NAVIGATOR

1-877-211-NAVI



<https://acanavigator.com/nh/home>

NH School Funding Fairness Project

NH School Funding Fairness Project supports equitable funding for public schools, and fair taxation of the property owners who pay most of our states' public education costs. We educate community members on how NH public schools are funded, why the system isn't working well for most people, and what we can all do to advocate for a better funding system with our elected leaders in Concord.



NH SCHOOL
Funding Fairness
Project



<https://fairfundingnh.org/>

NH Science and Engineering Exposition Association

The NHSEE Association supports the advancement of science and engineering education by conducting the NH state science and engineering fair. We have run the high school fair for many years and had incredible success at running NH's first state science and engineering fair for middle school students in 2025! We are looking to involve more students, schools and teachers in developing and practicing STEM skills.



<http://nhsee.org>

NH Statewide Family Engagement Center

NH Statewide Family Engagement Center (NH-SFEC) focuses on improving educational outcomes of NH students by connecting families, schools, and communities as partners in academic success and social-emotional well being of our children statewide.



New Hampshire

**STATEWIDE
FAMILY
ENGAGEMENT
CENTER**



<https://nhsfec.org/>

Office of Youth Services

During the school year, the Office of Youth Services provides mentorship, leadership development, and social-emotional support to youth across Manchester through in-school counseling, group programs, and community-based initiatives. Our offerings include evidence-based programs like Take Control and Future Success, specialized groups such as Boys to Men and the Female Empowerment Group, and civic engagement opportunities through the Manchester Youth Council. We work closely with schools and families to ensure youth have the tools, relationships, and opportunities needed to thrive

OYS
Office of Youth Services



<https://www.manchesternh.gov/Departments/Youth-Services>



Organization for Refugee and Immigrant Success

ORIS Pathfinders program is a once per month workshop series for new American teenagers. Participants choose what topics they learn each month, with a focus on professional and personal growth.



refugeesuccess.org

Public Health and Safety team

Manchester Health Department

Assist residents with connection to available resources to more adequately and appropriately meet their needs



<https://www.manchesternh.gov/Departments/Health/phast>

QUEEN CITY BICYCLE COLLECTIVE

Do-it-together repair service and affordable bikes available during open shop hours. Free helmets and affordable lights and locks for MSD students. Under 18 must be accompanied by a parent or guardian.



WWW.QCBIKE.ORG



championing student success.

REACH Crisis Service

REACH Crisis Services provides free and confidential services to survivors of domestic violence, sexual violence, stalking, and trafficking in the Greater Manchester Community



<https://www.reachnh.org/>

Rhythm & Roots Studio

Recreational dance, fitness, and wellness classes (with parent/guardian sign off if under 18)



www.rhythmandrootsstudiollc.com

Safari Youth Club

Safari Youth Club supports refugee and immigrant youth and their families by providing academic support, sports, and arts opportunities, in addition to assisting families as they integrate into their communities as new Americans.



<https://www.safariyouthclub.com/>

Scouting America New Hampshire

We provide youth activities and camping opportunities in partnerships with local units across Manchester. We also operate a year round camp that offers Summer Camp sessions.



Scouting America™

New Hampshire



nhscouting.org



championing student success.

SEE Science Center

For schools and organizations we offer many different programs for different age students both as field trips to SEE and as outreach to your location. For families we are open 6 days a week during the school year and offer affordable admission, membership and birthday party options.



<https://see-sciencecenter.org/>

Southside Middle School PTA

We plan events for both students and staff. We raise money through Dinner of the Month at various restaurants. We run typical fundraisers as well.

SOUTHSIDE PTA



<https://southside.mansd.org/>

Sparc Behavioral Health

We provide high quality ABA services in home, community or school with skilled and experienced BCBA's! Using evidence-based practices with a creative approach, we focus on each child as an individual and put the family first in our programming!



<https://sparcbehavioralhealth.com/>



STEM-MoBILE

We offer school visits and after-school programs with hands-on activities to teach kids K-12 about the science of biofabrication, including time to explore the STEM-MoBILE traveling lab space. The STEM-MoBILE can also attend existing community events in the state of New Hampshire, allowing attendees to explore our traveling lab and partake in short hands-on activities.



<https://manchester.unh.edu/outreach/stem-mobile>



Unchartered

Unchartered teaches science in disguise. Our lessons look like art class - silk painting, comics, resin casting - but sneak in real science while kids are too busy having fun to notice. We work in Title 1 schools with students who've been left out of traditional science education, and we make sure they know science belongs to them too.



unchartered



www.unchartered.org

UpReach

UpReach offers Equine Assisted Youth Programs designed to reduce stress, foster mindfulness, and cultivate essential soft skills—including teamwork, collaboration, and effective communication—all within a safe, supportive, and screen-free environment.



upreachtec.org

USA Ninja Challenge - Manchester

USA Ninja Challenge offers an exciting after school fitness program for kids aged 2-17. The program is designed to help kids overcome obstacles physically, while growing self esteem and confidence. Additionally we offer summer/vacation camps and Ninja Parties



Ninjamanchesternh.com

Waypoint

Teen Services assists youth who are housing unstable. Through collaboration with the youth, guardians, and schools, a social worker works to achieve safe, stable housing and a path to self-sufficiency for the young person. The goal of Teen Services is to help young people through crises and work to prevent harm.



<https://waypointnh.org/>



championing student success.

Webster Elementary PTO

The Webster Elementary PTO's mission is to support students, staff and faculty of Webster. We provide both fundraising and community building opportunities throughout the year including our annual BINGO nights, Movie Night, Paint Night, Christmas Ornaments, Spirit Gear and more!



Webster Elementary School
PARENT TEACHER ORGANIZATION



[https://websterelementarypto.my.canva.site/?](https://websterelementarypto.my.canva.site/?fbclid=IwY2xjawL6QqBleHRuA2FlbQlxMABicmlkETFXS05CZ2dTNEg5VVlzdVJoAR4EAwW0ah0sxZRuisSrPEOptVV7B9PPDuXa1Y4VIlz04gfjNMmc5H3IfI8Nvw_aem_dJ4gstmcF3aY77S9KMzUA)

[fbclid=IwY2xjawL6QqBleHRuA2FlbQlxMABicmlkETFXS05CZ2dTNEg5VVlzdVJoAR4EAwW0ah0sxZRuisSrPEOptVV7B9PPDuXa1Y4VIlz04gfjNMmc5H3IfI8Nvw_aem_dJ4gstmcF3aY77S9KMzUA](https://websterelementarypto.my.canva.site/?fbclid=IwY2xjawL6QqBleHRuA2FlbQlxMABicmlkETFXS05CZ2dTNEg5VVlzdVJoAR4EAwW0ah0sxZRuisSrPEOptVV7B9PPDuXa1Y4VIlz04gfjNMmc5H3IfI8Nvw_aem_dJ4gstmcF3aY77S9KMzUA)



championing student success.

Welcoming NH

We work with all those groups that provide services for immigrants, work with, ally with, advocate for or are immigrants as well. We build relationships and provide connections across the state.



welcomingnh.org



manchester COMPASS

Stay up to date on the latest!

Manchester Proud Compass is a community resource portal focused on supporting our public school system through the development of strong partnerships. Manchester Proud Compass is committed to reflecting the needs of our community.

Scan the QR Code below to filter through resources and explore opportunities in the Community

